



# Raureka Kindergarten

[heretaungakindergartens.co.nz](http://heretaungakindergartens.co.nz)



**Kindergartens**  
Te Matau-a-Māui



**Right from the  
start, we teach  
from the heart.**

## **Nau mai haere mai.**

Here at Raureka Kindergarten our tamariki are our taonga with unlimited potential, therefore kaiako teach from the heart with a focus on whānau aspirations. Each tamaiti is on a unique learning journey and we believe whānau, hapū, iwi and our community are central to this learning and unlocking potential. We provide tamariki with a homely environment where relationships and aroha come first and tamariki are free to explore, learn and make connections in a peaceful and natural environment.

### **Our Vision Our Whakataukī**

E kore e ngaro te kākano  
I rūia mai rā i Rangiātea.  
Ko te hua nei nā lo Mātua  
Te Kore.

Never shall be lost the seed  
sown at the altar of the sky,  
it is the seed of all potential.





## Every learning journey is unique.

Kindergarten is a place where tamariki learn through play, with and alongside others, building on the skills and knowledge they bring from their home environment. Kaiako weave together the principles and strands of Te Whāriki in collaboration with tamariki, whānau, and the community to create a localised and individualised learning programme.

Every child/tamaiti will have their own profile book, which documents their learning journey at kindergarten. Profile books belong to the child/tamaiti; they can take these home anytime, or you are welcome to read them at the kindergarten.

## Nurturing through nature.

Raureka Kindergarten is part of the Heretaunga Kindergarten Association which has a proud history of providing quality early learning experiences.

Our stunning environments reflect the unique character of Aotearoa New Zealand with a focus on environmental sustainability. All our kindergartens are proud members of Enviroschools, committed to a long-term sustainability journey, where tamariki connect with and explore the environment.

All our kindergartens offer a play-driven localised learning programme based on the Early Childhood Curriculum, Te Whāriki. As an association we honour our commitment to Te Tiriti o Waitangi.





## How we communicate.

To develop and maintain close and respectful relationships, we have several ways to keep you informed about your child's progress. These include daily chats about learning, meetings with the kaiako, whiteboard messages, newsletters, the whānau notice board, our website, and Facebook.

Storypark is an online, user-friendly tool that we use to share learning and communicate between home and kindergarten. Support is available for learning how to use Storypark, and you can download the free app on your phone.



## How you can be involved.

We welcome your involvement in kindergarten life and do everything we can to keep you connected. First and foremost, we invite you to be part of the learning journey by talking with us, sharing what you know about your child, and letting us know what aspirations you have for them. This helps us develop an individualised plan.

We continuously seek feedback on policy reviews and any significant developments for the kindergarten. You are welcome and encouraged to spend time with us during our sessions, for as long as you like. We often require whānau helpers for excursions and appreciate support with this. Additionally, we encourage you to share your talents or skills to support further learning for our tamariki.

# Discover - Our Tamariki Management System.

Discover supports our Kaiako and Support Office teams, making it easier and more efficient to manage enquiries, enrolments, waitlists, school transitions, staff rosters and ratios, visitor tracking, invoicing, and all other day-to-day aspects of a successful day at kindergarten.

Discover also provides a user-friendly digital platform for whānau and caregivers - no more paper required. You can make enrolment enquiries online, and the system helps track your progress from enquiry through to attendance, including digital sign-in and sign-out processes. This provides more time for kaiako to focus on the education and learning journey for your tamariki.

Once your enrolment is confirmed, your kaiako team will send you information about Discover along with instructions and PINs. They can assist you in setting up the Home App if needed.



## Home

Upon receiving the link, you'll be directed to a login screen where you'll enter your email address in the Username field and click "Reset Password." The system will email you a temporary password, which you can use to create a more memorable password for weekly use.

Kaiako need your support to meet Ministry of Education requirements for verifying your child's attendance via Electronic Attendance Verification (EAV). You can complete this verification either through the email link sent every Sunday evening or via the Home app.

Once on the Parent Portal, navigate to 'Attendance' and then click 'Verify' if you agree with the sign-in/out times. A few clicks and it's all done - giving kaiako more time to discuss the exciting day your tamariki have had rather than chasing signatures.

If you are unable to complete any of our processes digitally, please chat with your kaiako team, and they will be more than happy to talk to you about the alternative options that allow us to comply with the Ministry of Education requirements.



## In the heart of your community.

At Heretaunga Kindergartens, we have 100% qualified kaiako who go the extra mile to bring out the best in your tamariki. We're an association of 16 kindergartens across Flaxmere, Hastings, Havelock North, and Central Hawke's Bay - all with a focus on quality education, sustainability, and local partnerships.

We've been here since 1928 and we're here to stay, in outstanding environments that encourage learning and play. We're your neighbours, your friends, your whānau, and we're right where you need us, in the heart of the community.

Meet our qualified kaiako and find out more.

[heretaungakindergartens.co.nz](https://heretaungakindergartens.co.nz)



**Kindergartens**

Te Matau-a-Māui

# Hours & Fees

Monday - Friday | 8.30am - 3.00pm | 20 January - 19 December 2025

We're open through term breaks (excluding Christmas break, statutory holidays and kaiako professional development days).

## 2025 Statutory Holidays

Waitangi Day – Thursday 6 February	King's Birthday – Monday 2 June
Good Friday – Friday 18 April	Matariki – Friday 20 June
Easter Monday – Monday 21 April	Hawkes' Bay Anniversary - Friday 24 October
Anzac Day – Friday 25 April	Labour Day – Monday 27 October

## Kaiako Professional Development

We will be **closed** on the following dates to support kaiako professional development, ensuring continuous growth and improvement:

- Thursday 17th April (1 day)
- Monday 7th July - Friday 11th July (1 week)
- Friday 3rd October (1 day)

## Fees

Tamariki aged 3 – 5 years old are eligible for 20 hours of free early childhood education (ECE). This means that if your child is 3, 4 or 5 years old and attends one of our kindergartens, the cost can be fully subsidised for up to six hours a day and up to 20 hours a week. When you attest your child to the full 20 hours a week at our kindergarten, you will be eligible for a total of 30 hours per week – Free!

Tamariki who are 2 years old are also free at our kindergarten if you intend to use your 20 hours entitlement once your child turns 3.

If you do not attest all or any of your child's 20 hours ECE to this kindergarten, a fee of \$6.00 per hour for any enrolled hours over and above the attested hours will be charged.

## Enrolling your child

Complete the enrolment form, bring a copy of the birth certificate and immunisation records. Tamariki can start from their 2nd birthday and can stay right up to their 6th birthday.



06 878 8216



raureka@hfka.co.nz

# Rhythm of the day

<b>8.30am</b>	Tamariki and whānau arrive.
<b>9.00am</b>	Morning tea and karakia to open our day.
<b>Throughout the day</b>	Free play throughout the day. (Please read our statement of philosophy and assessment and curriculum documentation to gain an understanding of FREE PLAY or please ask one of the kaiako.)
<b>11.30am</b>	Lunch time.
<b>1.30pm</b>	Afternoon tea and karakia to close our day.
<b>2.15pm</b>	Kaiako and tamariki tidy and clean the kindergarten.
<b>2.30pm - 3.00pm</b>	Whānau pick up tamariki between 2.30pm to 3.00pm.

## Settling your child at kindergarten

Please discuss how you would like to transition your child into kindergarten, so a personalised plan can be developed.

## Food:

We provide all food - tamariki do not need to bring a lunchbox

## What to bring

- Water bottle
- Spare set of named clothes
- Sunhats for terms 1 and 4, warm hats as needed when cold
- Specific sunscreen if your child has sensitivity

## What to wear

Comfortable clothing you don't mind getting messy or wet. Tamariki learn through play, so they need to be able to move freely, get messy, dirty or wet at times. Lost property can be collected from the basket by the entrance.

## Sleep

If your child requires a sleep, please discuss this with the team. The kindergarten provides individual linen which is laundered weekly.

## Sick Tamariki

If your child is sick, please keep them at home to prevent the spread of illness and for their own well-being. In the case of vomiting and/or diarrhoea, they must not attend kindergarten for 48 hours after the last bout. Please contact the kindergarten to let them know that they will not be attending.

## Toileting

If your child is not toilet trained they can still attend kindergarten and you will need to supply nappies. If your child is in the process of toilet training, please talk to the teaching team so they can support this process.



# Meet our kaiako & ringawera



Meet our wonderful team of qualified  
and certificated kaiako.



**Natalie  
Reid**

Kaiako Matua  
(Head Teacher)



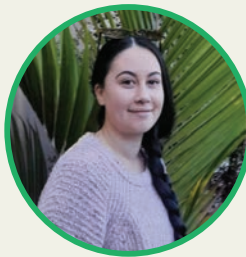
**Michelle  
Rochester**



**Natasha  
Humphreys**



**Kacee  
Subritzky**



**Rebekah  
Jeffares**



**Jeolie  
Peebles**  
Ringawera  
(Kitchen Hand)

